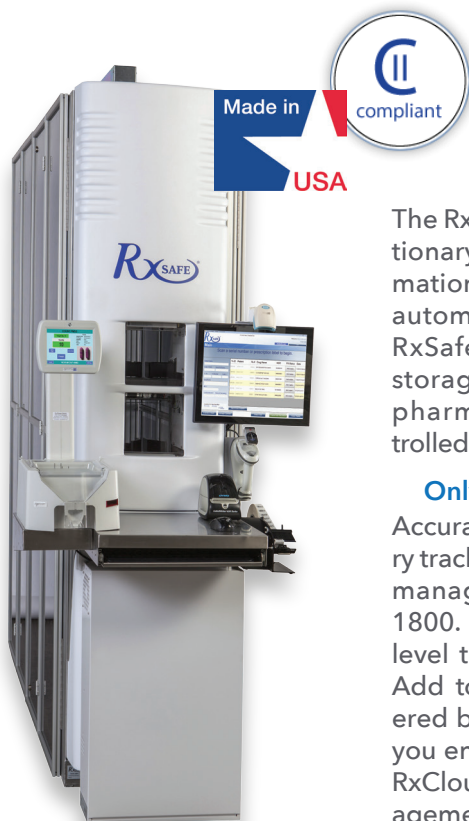


# RxSafe 1800

## Comprehensive, Automated, Robotic Storage & Retrieval for All Pharmacies



**I'm a vial filling robot...but so much more!**  
**Manage your complete store inventory.**

The RxSafe 1800® represents an evolutionary leap in robotic pharmacy automation technology. Rather than simply automating fast-moving drugs, the RxSafe 1800 provides secure robotic storage and retrieval for your entire pharmacy inventory including controlled substances.

### Only Item Level Tracking Solution

Accurate, perpetual, real-time inventory tracking is one of the major inventory management benefits of the RxSafe 1800. In fact, RxSafe has the only item level tracking solution in the industry. Add to it item level forecasting powered by Datarithm, with cost data, and you end up with a powerful tool called RxCloud Analytics™. Return the management of inventory back to management. Spend money on something other than inventory.

Since all drugs are stored in native packaging, there is no need for your pharmacy staff to spend time manually restocking dispensing cells. The remote stock management feature manages all inventory and filling, even if it's in the refrigerator. And, we're compatible with virtually all pharmacy management software.

### Now Comes With an RxAWS Remote Workstation

Many pharmacies' workflow requires concurrent tasks like checking in inventory, filling prescriptions, and accessing reports for things to run smoothly and efficiently. Since the RxSafe 1800 now comes with an RxAWS™ (Auxiliary Workstation), these activities can be accomplished simultaneously without disruption.



Accuracy & Speed



Space Savings



Narcotics Security



Inventory Management

- One tech can safely fill up to 120 scripts per hour
- Eliminates hundreds of trips to the shelves each day
- Monitors and stores narcotics safely and securely
- Biometric login required for medication access
- Eliminates theft and diversion
- Real-time tracking of every operator interaction
- Accurate prescription filling
- Built-in scale for automatic inventory verification with discrepancy alarm
- Opportunity for labor reallocation

- Expiration date and lot number tracking
- Reclaim valuable floor space
- Increased inventory turns with less on hand inventory
- Fits into existing pharmacy workflow patterns and floor plans
- Remote Stock Management—includes all items in inventory, even if they're in the refrigerator
- Automates wholesaler order put away and stock bottle return
- Utilizes Eyecon® automated pill counter (optional)

## Specifications for RxSafe 1800® System (single tower)

• Dimensions	W=25" L=102" H=95"
• Weight	700 lbs. per RxSafe 1800™ tower
• Capacity	Up to 1800 stock bottles per tower
• Script Fill Rate	Up to 120 scripts filled per hour with single operator
• Communications	Ethernet connection to controller
• Internal Temperature/Humidity	Same as pharmacy space
• Internal Cleanliness	HEPA filter, positive pressure
• Peripherals/Workstation	Touch screen monitor, biometric fingerprint reader, integrated barcode scanner, barcode label printer, wireless sequencing scanner, keyboard, mouse, automated serial number tag feeder, Eyecon® automated tablet counter (optional)
• Robotics Motion Controller	Proprietary RxSafe motion control and logic
• Software	Proprietary RxSafe software and firmware

## Specifications for RxSafe Controller

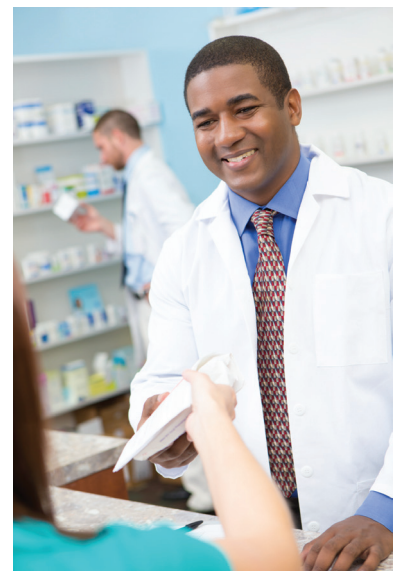
• Computer	Industrial quality with 2x256GB solid state hard drives
• Data Security	RAID 1 onboard with full encryption
• Operating System	Microsoft Windows 10 Professional, 64-bit
• Database	Microsoft SQL Server
• Power	110 volt A/C, 10 amp
• Uninterruptable Power Supply	1500 VA, up to 1 hour "power-out" run time

## RxSafe Field Performance Data

Cost Reduction	30% less on-hand inventory 19% fewer FTE hours 33% less pharmacy floor space required Avoids waste due to expired drugs 100% accurate CII audit results Millions of prescriptions filled with unparalleled accuracy
----------------	--

## Custom Pharmacy Layout Services

Workflow Optimization	Integrates RxSafe automation into existing pharmacy space
-----------------------	---



Revised 06.27.24